

# AMERICAN HIGIENE

*Panamatic Front-Loading Washer Disinfectors*



*infection control*



## Introduction

**With the Panamatic XL1 and XL2, DDC Dolphin brings a new generation of front-loading washer disinfectors to the market.**

Designed to empty, wash and disinfect human waste containers such as bedpans, commode pots and urine bottles, Panamatics incorporate modern design concepts and the latest technological advances.

Most important of all, Panamatics comply with all the latest European Standards and Water Regulations.

“Panamatics... a celebration of technology, style and performance!”

# WASHES

## Core Values

### All Panamatics share certain fundamental design principles

#### In addition, Panamatics are:

##### Simple to install

requiring single or three phase electric power, 110mm soil pipe, 15mm hot and cold water supply

##### Simple to operate

via their user-friendly control panel and fully automated features

##### Simple to service and maintain

with advanced computer diagnostics and in-built routine maintenance warning systems

##### Apparent simplicity however conceals an exceptionally high performance specification

The units are fabricated from high-grade stainless steel with pressed rather than welded wash chambers to eliminate any crevices where bacteria might linger. Powerful rotating nozzles and jets ensure efficient and effective soil removal. Disinfection temperatures are constantly monitored by an in-built computer.

##### Throughout, Panamatics conform to the highest standards of safety, hygiene, and care for the environment

First and foremost, Panamatics comply with all required Standards including:

- HTM2030 and HTM01-01

- EEC 93/42 Medical Devices Directive (class 2a)

- European standards for electrical safety  
EN 61010-2-045

- European standards for connection to water supplies

Panamatics are CE marked and certified independently by TÜV



# PANAMATIC XL1

Processing 1 bedpan and 1 bottle, or 4 bottles per cycle

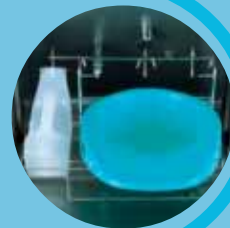


### Three cycle programmes:

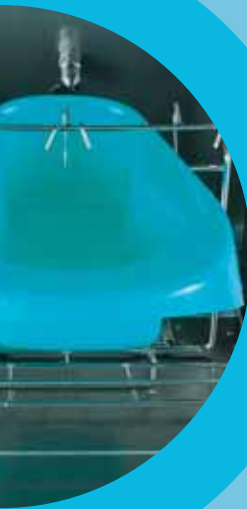
- Programme one - for light soil removal and bottles
- Programme two - for medium soil removal
- Programme three - for heavy soil removal

Automatic emptying as door closes

Digital display showing programme selected, cycle stage and temperature. Error and alarm messages are displayed here too.



Available in two models: manual or hands-free. The hands-free model incorporates a foot pedal for opening the door and elbow buttons for selecting and initiating cycles.



Superior wash performance  
flushing waste away  
before washing utensils  
thoroughly, first with cold  
water, then with a combination  
of hot water and detergent

Thermal disinfection to meet the  
most stringent international  
standards



See page 10 for accessories  
See page 12 for technical information

# PANAMATIC

Processing 2 bedpans and 2 bottles per cycle



### Three cycle programmes:

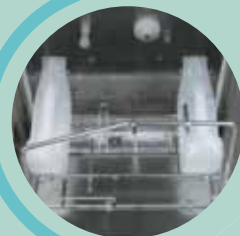
- Programme one - for light soil removal and bottles
- Programme two - for medium soil removal
- Programme three - for heavy soil removal

Automatic emptying as door closes

Digital display showing programme selected, cycle stage and temperature. Error and alarm messages are displayed here too.



Available in two models: manual or hands-free. The hands-free model incorporates a foot pedal for opening the door and elbow buttons for selecting and initiating cycles.



Superior wash performance flushing waste away before washing utensils thoroughly, first with cold water, then with a combination of hot water and detergent

Thermal disinfection to meet the most stringent international standards



See page 10 for accessories  
See page 12 for technical information

## Panamatic Combi models

**The XL1 and XL2 are available also in low profile formats and can be integrated neatly with other sluiceroom furniture**



◀ Combi 1 Washer Disinfecter, work surface and wash hand basin

▼ Combi 2 Washer Disinfecter, work surface, wash hand basin and bucket sluice

900mm Wide  
600mm Deep  
1000mm High



“Panamatic Combis... the complete  
sluiceroom solution”

1350mm Wide  
600mm Deep  
1000mm High

# MODELS



1800mm Wide  
600mm Deep  
1000mm High

◀ Combi 3 Washer Disinfector, work surface, wash hand basin, bucket sluice and single door storage cupboard

▼ Combi 4 Washer Disinfector, work surface, wash hand basin, bucket sluice and double door storage cupboard



2250mm Wide  
600mm Deep  
1000mm High

# Accessories

1

## Dosing Pumps

- to dispense inhibitors to prevent the build-up of limescale
- to dispense detergents and rinse aids

Pumps and chemicals are held within the body of the machine

1



2

## Special Purpose Wash Racks

### Basket

A special wash basket is available for processing small items such as kidney bowls, sputum bowls and other similar articles

### Suction Bottle Rack

A special wash chamber rack is available for processing suction bottles

2



3

## Wall Racks

Available in several sizes:

- Rack to hold 9 bedpans (900mmW x 350mmD x 720mmH)
- Rack to hold 11 bottles (700mmW x 350mmD x 720mmH)
- Rack to hold 6 bedpans and 6 bottles (900mmW x 350mmD x 720mmH)

3



4

### Bucket Sluice

Designed to integrate perfectly with the Panamatic XL bedpan washer disinfectors. The integration is so complete that both units can share the same water supply and drain.

4



5



**Vector bedpan with lid**  
Size 355mm x 308mm x 108mm



**Selina Super slipper pan with lid**  
Size 335mm x 245mm



**Favorit Fracture-Pan with lid**  
Size 449mm x 309mm x 99mm

5

### Bedpans, Bottles and other Holloware



**Male bottle with lid**  
Size 1000ml



**Vomit Bowl**  
Size 1.5ltr



**Traditional round commode bucket with lid**

# Technical Information

## Services

You can arrange installation yourself, or if you prefer, we will install the equipment for you

### Electrical supply

Single phase, 230V / 50Hz, 16amp

or

Three phase with neutral, 415V / 50Hz, 16amp

### Water supply

15mm hot and cold water supply terminating in a washing machine valve

minimum pressure 0.7 bar

maximum pressure 6.0 bar

Panamatics comply with European standards for connection to water supplies

### Soil connection

110mm P or S trap

### Cycle stages

Cold water flush

Hot water wash, with detergent if selected

Rinse

Thermal disinfection

Cooling rinse (optional)

### Cycle time

7 - 8 minutes, depending on cycle selected and temperature of incoming water

### Noise level

54 dB

### Disinfection

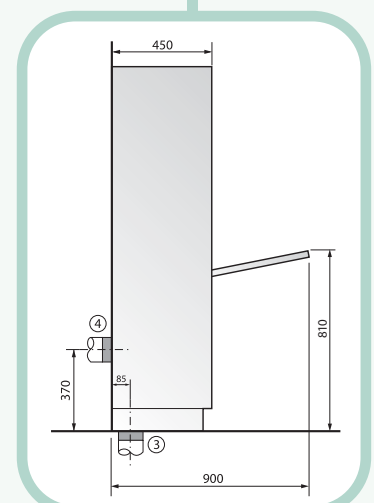
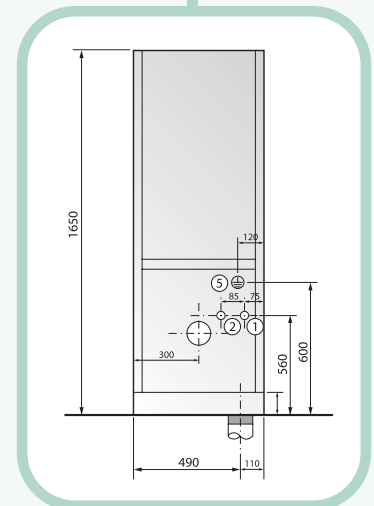
In line with British and European standards (adjustable should disinfection standards change in the future)

## After Sales Service

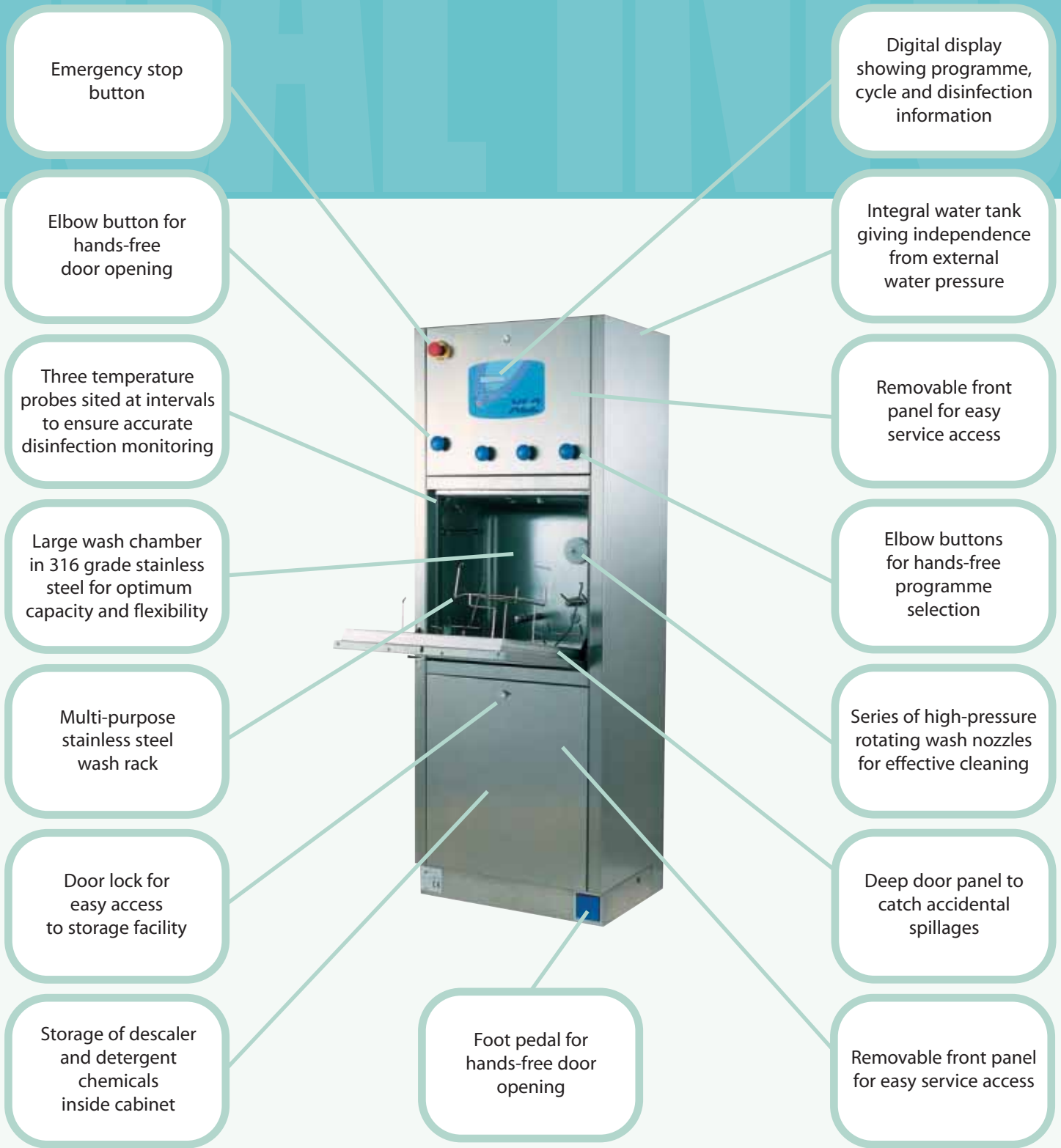
Once your Panamatic has been installed, our service engineers will call to commission to ensure that each machine conforms to the exacting standards demanded by our quality systems. We will train your staff how to use and look after your Panamatic properly. During the warranty period, technical support is provided by our own highly skilled engineers. At the end of the warranty period, we offer a choice of service contracts to keep your Panamatic working at its best.

## Warranty

12 months parts & labour warranty



- ① Hot Water Connection
- ② Cold Water Connection
- ③ 'S' Trap Connection 110mm
- ④ 'P' Trap Connection 110mm
- ⑤ Mains input connector



Emergency stop button

Digital display showing programme, cycle and disinfection information

Elbow button for hands-free door opening

Integral water tank giving independence from external water pressure

Three temperature probes sited at intervals to ensure accurate disinfection monitoring

Removable front panel for easy service access

Large wash chamber in 316 grade stainless steel for optimum capacity and flexibility

Elbow buttons for hands-free programme selection

Multi-purpose stainless steel wash rack

Series of high-pressure rotating wash nozzles for effective cleaning

Door lock for easy access to storage facility

Deep door panel to catch accidental spillages

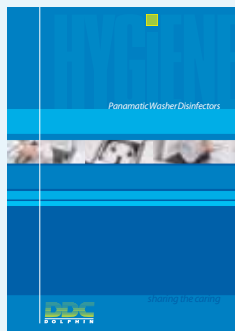
Storage of descaler and detergent chemicals inside cabinet

Foot pedal for hands-free door opening

Removable front panel for easy service access

# Our other products

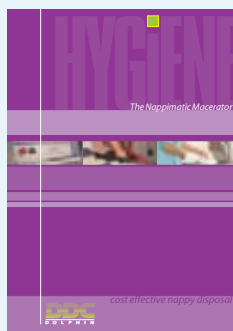
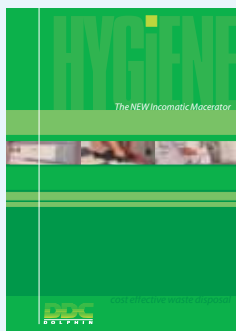
## Panomatic Top-Loading Washer Disinfectors



processing a wide range of commonly used holloware (including plastic supports for disposable bedpans) and available in several different models



## Incomatic and Nappimatic Macerators



designed for on-site disposal of incontinence pads, nappies and other similar waste

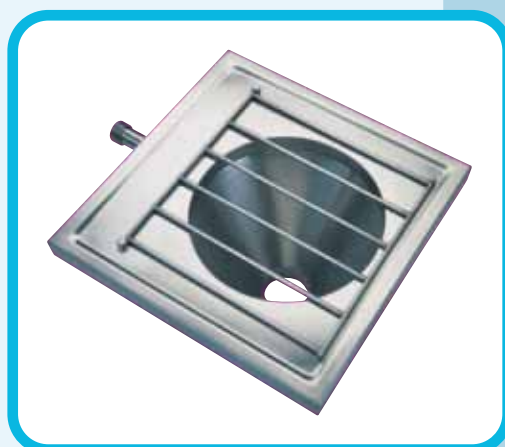


# R PRODUCTS

## Hygenex Stainless Steel Sanitaryware



a wide range of stainless steel products including manual sluices and slophoppers, sinks, janitorial units and wash hand basins (all with lever taps if required)



## Product Range

- Panamatic Front-Loading Washer Disinfectors
- Panamatic Top-Loading Washer Disinfectors
- Hygenex Stainless Steel Sanitaryware
- Incomatic Pad Macerators
- Disposable Bedpan Macerators
- Ancillary Sluiceroom Equipment
- Sluice Servicing and Validation



DDC Dolphin  
The Fulcrum  
Vantage Way  
Poole, BH12 4NU

Telephone: +44 (0) 1202 731555  
Facsimile: +44 (0) 1202 731666  
Email: [sales@sluice.co.uk](mailto:sales@sluice.co.uk)  
Web: [www.sluice.co.uk](http://www.sluice.co.uk)



Certificate No: 1161/96